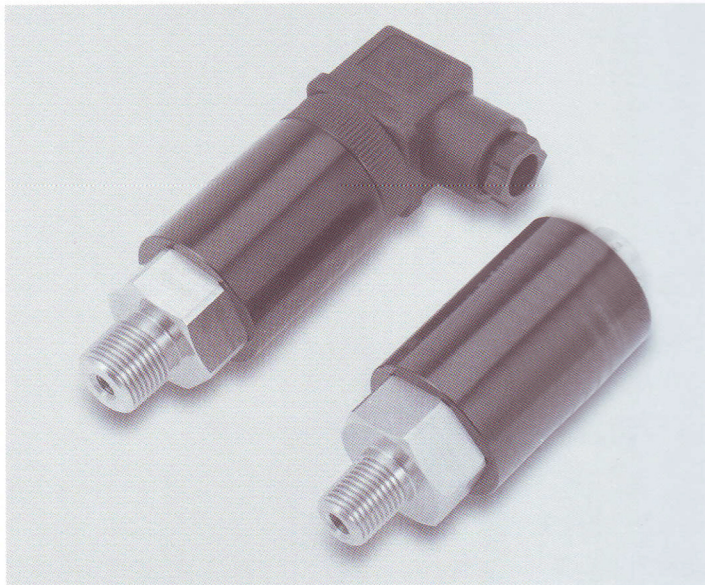




## Series QUE

General Purpose Pressure Transducer



QUE model has applied Silicon Piezoresistive cell, which attached High Temperature Glass on Titanium. Since it does not use O-ring, there is no possibility of corrosion and leak. Its low price makes it suitable for industrial uses. With its various outputs, it may be interfaced with various controllers

### Feature

- CE Certified
- Built-in amplifier Circuit(VDC, mA)
- Measuring range 0~1,500kgf/cm<sup>2</sup>
- 0.5%FS accuracy
- Piezoresistive silicon cell
- Stainless steel, Titanium media-wetted material

### Applications

- Process control
- Hydraulics & Pneumatic
- Compressor Control
- Chillers
- Refrigeration Equipment

## SPECIFICATIONS

### Range

2, 5, 10, 20, 30, 50, 100, 200, 300, 500, 1000, 1500kgf/cm<sup>2</sup>

### Performance

Accuracy	±0.5%FS
Linearity	±0.35%FS
Hysteresis	±0.15%FS
Repeatability	±0.15%FS
Thermal Effect on Zero	±0.05%FS/°C
Thermal Effect on Span	±0.05%FS/°C
Compensated Temperature Range	0 ~ 50°C
Operating Temperature Range	-20 ~ 80°C

### Electrical

Excitation	11 ~ 28VDC(PTDA 12VDC Max.)
Output	10~20mV/V 1~5VDC, 4~20mA(2Wire)
Electrical Connection	Connector, Head, Din Connector

### Physical

Proof Pressure	150%FS Max.
Burst Pressure	200%FS Min.
Vibration	49.1m/s <sup>2</sup> {5G}, 10~500Hz
Shock	490m/s <sup>2</sup> {50G}
Pressure Port	PT1/8", PF1/8", PT1/4" (Stock), PF1/4", PT 3/8" (Stock), PF 3/8"
Media-Wetted Materials	Stainless Steel 304(Optional 316), Titanium 87%
Weight	Connector type : Approx. 140g (Sensor Only)

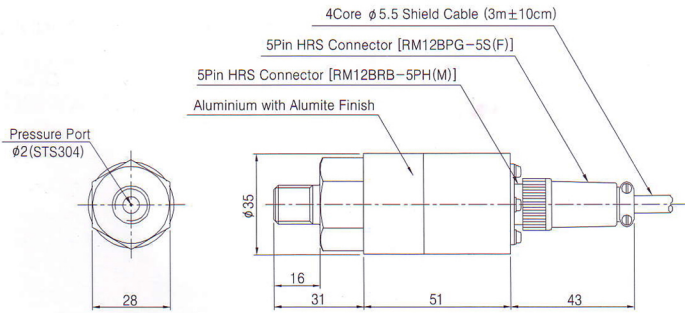
\* Specifications are subject to change without notice

WZO CONTROLS LTD



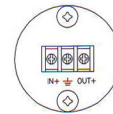
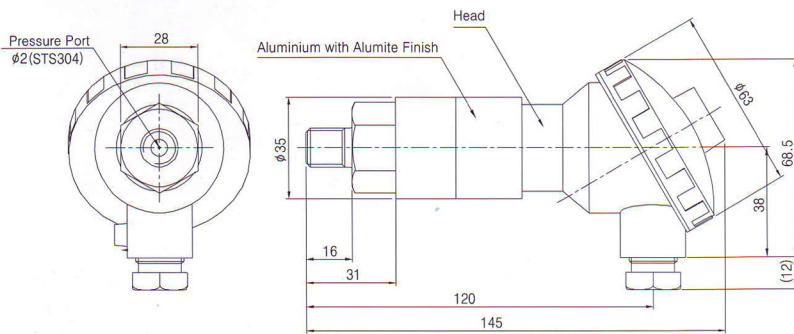
# Dimension

## ► Connector Type



Pin No.	Wire Color	Connections		
		4Wire	3Wire	2Wire
1	Red	Input ⊕	Input ⊕	Input ⊕
2	White	Output ⊖	Common ⊖	×
3	Black	Input ⊖	×	Output ⊕
4	Green	Output ⊕	Output ⊕	×
5	Shield	Earth	Earth	Earth

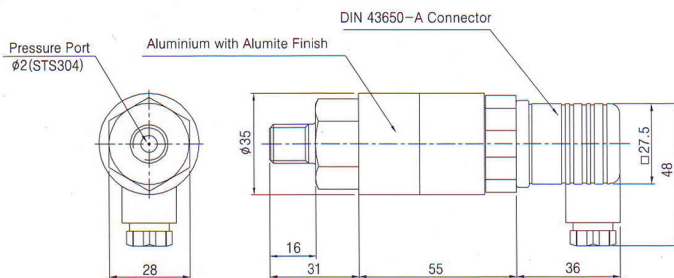
## ► Head Type



Terminal

No.	Connections
	2Wire
1	Input ⊕
2	Earth
3	Output ⊕

## ► PLN Model (Internal Amp.)



Terminal

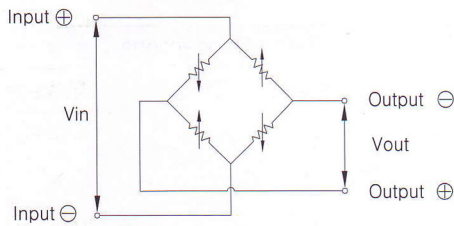
Pin No.	Connections	
	3Wire	2Wire
1	Input ⊕	Input ⊕
2	Common ⊖	Output ⊕
3	Output ⊕	×
±	Earth	Earth

\* Specifications are subject to change without notice

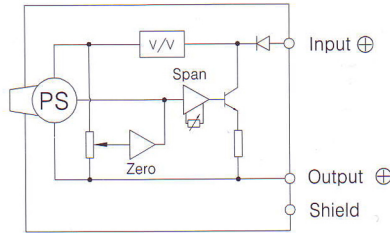


# Internal Circuit Diagram

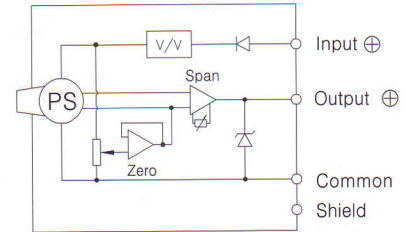
## ► mV Output Type



## ► 2Wire mA Output Type



## ► 3, 4Wire VDC Output Type



# Ordering Information

Model Name	QUE	B	0010	K	A	A	A	Option
Output								A : Normal
Pressure Range								Connecting Methods
								A : Connector
								B : Water proof connector
								H : Head
								I : Din 43650-A connector
								Pressure port
								A : PT3/8"
								D : PF1/4"
								B : PF3/8"
								E : PT1/2"
								C : PT1/4"
								Q : PF1/2"
								Pressure Unit
								K : kgf/cm <sup>2</sup>
								B : bar
								P : psi
								M : MPa

\* Specifications are subject to change without notice