



Series TCLCC

Tension Canister Load Cell (50kg ~ 20t)
Canister Type

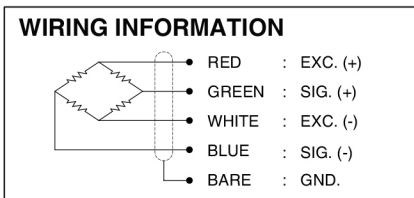


The TCLCC series load cells are designed for measuring tensile loads up to 20 tonnes are particularly suited for industrial application where optimum precision is needed. Featuring high-alloy tool steel construction for excellent repeatability, the unique element design provides high rated output (3mV/V) with low deflection. It is recommended that the load cell should incorporate rod end ball joint assemblies to reduce the overall length.

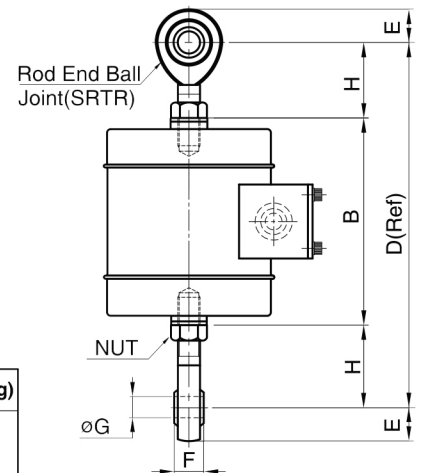
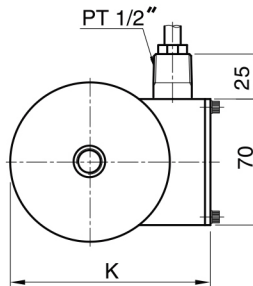
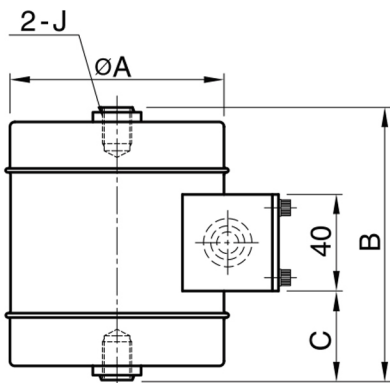
- Hermetically sealed
- Robust high capacity design
- High rated output (3mV/V)

SPECIFICATIONS

ORDERING INFORMATION	
TCLCC - 5T	
TYPE	CAPACITY
TCLCC1	50, 100, 200, 300, 500kg
TCLCC2	1, 2, 3, 5, 10, 20ton



TYPE	TCLCC1	TCLCC2
Rated capacity (R.C.)	50, 100, 200, 300, 500kg 1, 2, 3, 5, 10, 20ton	
Rated output(R.O.)	3.0mV/V ± 0.1%	3.0mV/V ± 0.2%
Non-linearity	≤0.05% R.O.	≤0.1% R.O.
Hysteresis	≤0.02% R.O.	≤0.1% R.O.
Non-repeatability	≤0.02% R.O.	≤0.1% R.O.
Creep error	≤0.02% in 20min.	≤0.1% in 20min.
Zero balance	≤1% R.O.	
Compensated temperature range	-10 ~ 70°C	
Operating temperature range	-20 ~ 80°C	
Temp. effect on rated output	≤0.03% LOAD/10°C	≤0.05% LOAD/10°C
Temp. effect on zero balance	≤0.03% R.O./10°C	≤0.05% R.O./10°C
Terminal input resistance	350 Ohms ± 3.5 Ohms	
Terminal output resistance	350 Ohms ± 5 Ohms	
Insulation resistance (Min.)	5000 MOhms at 50V DC	2000 MOhms at 50V DC
Excitation voltage	10V(Recommended), 15V(Max.)	
Electrical connection	Ø9mmx5m(22AWG x 4Core Shielded)	
Protection class	meets IP 67	
Safe overload	150% R.C	
Ultimate overload	300% R.C	



DIMENSIONS-mm

Rated Capacity	A	B	C	D	E	F	G	H	J	K	Rod End Ball Joints	Weight(kg)
50~300kg(490.3~2942N)	88	110	35	192	16	16	12	41	M12 x 1.25 Depth 13	112	SRTR1	2.8
500~1000kg(4.903~9.807kN)		106	33	188								
2~5t (19.61~49.03kN)	88	145	52.5	255	32	28	22	55	M24 x 2 Depth 30	112	SRTR2	4.5
10t (98.07kN)	138	210	70	430	50	43	40	110	M39 x 2 Depth 50	171	SRTR3	12.5
20t (196.1kN)	164	283	120	513	60	53	50	115	M50 x 2 Depth 65	199	SRTR4	27.4

* Specifications are subject to change without notice